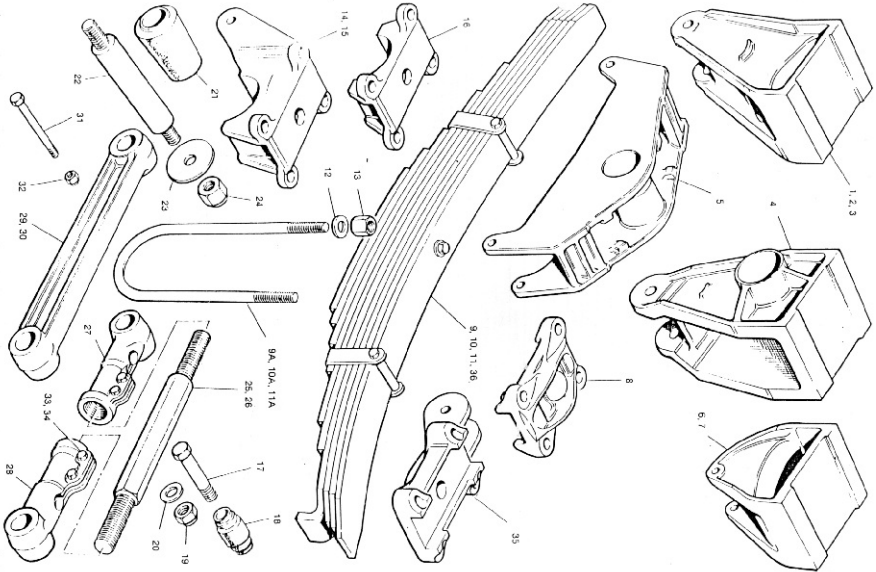


PRO 'T' SERIES
Suspension



SUSPENSION PARTS

Assembly Equaliser

(items 4, 5, 21, 22, 23, 24, 31 & 32)

Assembly Rigid Torque Arm forward

(items 18 & 29)

Assembly Rigid Torque Arm Rear (items 18,30)

(items 18, 25, 27, 28, 33 & 34)

Assembly Adjustable Torque Arm forward

(items 18, 26, 27, 28, 33 & 34)

Assembly Adjustable Torque Arm Rear

(items 18, 26, 27, 28, 33 & 34)

- | | |
|--|--|
| 1. Front Hanger | 13. Road Spring U Bolt Nut |
| 2. Front Hanger Bracket - Heat Treated | 14. Spring Seat - Standard 68 25 |
| 3. Front Hanger - Towing | 15. Spring Seat - Low 25 4 |
| 4. Equaliser Bracket - Standard | 16. Spring Seat - Underslung Axle |
| 5. Equaliser | 17. Torque Arm Bolt |
| 6. Rear Hanger Bracket - Standard | 18. Torque Arm Bush |
| 7. Rear Hanger Bracket - Heat Treated | 19. Torque Arm Bolt Nut |
| 8. Top Plate | 20. Torque Arm Bolt Washer |
| 9. Road Spring 8 Leaf | 21. Equaliser Bush |
| 9A Road Spring U Bolt | 22. Equaliser Shaft |
| 10. Road Spring 9 Leaf | 23. Equaliser Shaft Washer |
| 10A Road Spring U Bolt | 24. Equaliser Shaft Nut |
| 11 Road Spring 10 Leaf | 25. Adjustable Torque Arm Screw (Fwd Short) |
| 11A Road Spring U Bolt | 26. Adjustable Torque Arm Screw (Rear Long) |
| 12. Road Spring U Bolt Washer | 27. Adjustable Torque Arm End (RH Thread) |
| | 28. Adjustable Torque arm end (LH Thread) |
| | 29. Rigid Torque Arm (Fwd Short) |
| | 30. Rigid Torque Arm (Rear Long) |
| | 31. Equaliser and Rear Hanger Bracket Bolt |
| | 32. Equaliser and Rear Hanger Bracket Bolt Nut |
| | 33. Adjustable Torque Arm End Bolt |
| | 34. Adjustable Torque Arm End Bolt Nut |
| | 35. T/ Arm Mounting Bracket - Underslung Axle |
| | 36. Road Spring Short 10 Leaf - Centre |